

kanata theatre

presents

The



Stillborn



Lover

by Timothy Findley

CAST

| | |
|-----------------|-----------------|
| HARRY RAYMOND | Brooke Keneford |
| MARIAN RAYMOND | Dorothy Beak |
| DIANA MARSDEN | Beverley Brooks |
| MICHAEL RIORDAN | Ben Tolley |
| JULIET RIORDAN | Gwendy Tolley |
| JACKMAN | Martin Weeden |
| MAHAVOLICH | Paul Welch |

directed by

Gwen Knight & Peter Jefferson

Nominally, the setting of *The Stillborn Lover* is a safe house overlooking the Ottawa River at Rockcliffe. As the play unfolds, settings in other locations are evoked - a garden in Nagasaki, a courtyard and a bedroom in Cairo, a breakfast room and an antechamber in the Riordan house. The action of the play takes place in 1972 and earlier to the 1940s and '50s.

There will be one intermission; coffee, soft drinks and desserts will be available. Please be considerate: ensure that pagers and cellular phones are turned off. The use of cameras or tape recorders during the performance is not permitted.

PRODUCTION STAFF

| | |
|--------------------------|---|
| PRODUCTION MANAGER | Anne-Marie Davies |
| ASSISTANT to DIRECTORS | Sheryne Lalonde |
| STAGE MANAGER | Wendy Wagner |
| ASSISTANT STAGE MANAGERS | Laura Bawman, Cameron Lugg |
| STAGE CREW | Bob Carey, Rohan Brooks, Megan Prevost, Julie Clayton, Vera Grbic |
| SET DESIGN | Adell Hay |
| SET CONSTRUCTION | Bill Williams |
| Assisted by | Tony Francis, Earl McLaughlin, Ron Hay |
| SET PAINTING | Amy Adams, Adell Hay |
| FURNISHINGS | Sandy Wynne, Brenda Scherloski |
| SOUND DESIGN | Rob Mitchell |
| SOUND EFFECTS | Rob Fairbairn |
| Sound assistant | Betty Francis |
| LIGHTING DESIGN | Karl Wagner |
| LIGHTING OPERATOR | Nancy Warner |
| Assisted by | Guy Buller, Greg Winklemaier, Paul Gardner, Cameron Lugg, Bill Williams |
| COSTUMES | Cheryl Mitchell |
| Assisted by | Erin Ryan, Shann McGrail, Christine Walton, Helen Weeden |
| DRESSERS | Sheryne Lalonde, Jen Hethrington, Yvonne Leduc, Carrie Owen, Karinn Smith |
| PROPERTIES | Sheryl Bell |
| Assisted by | Alicia Dean, Helen Weeden |
| MAKE-UP | Jen Hethrington |
| Assisted by | Laurie Cardinal, Kelly Fuoco, Michèle Baddoo |
| HAIR STYLING | Carol Walkey |
| CONTINUITY | Jenny Haynes, Rosemary Keneford, Jen Hethrington, Sheryne Lalonde, Katie Betts |
| HOUSE MANAGER | Jim Ritchie |
| REFRESHMENTS | Jane Maslin, Adèle Vickers |
| PROGRAM | Dewi Williams |
| PUBLICITY | Susan Monaghan |
| BOX OFFICE (831-4435) | Dorothy Beak |

Original music for this production was composed by Rob Mitchell

*Kanata Theatre acknowledges with special appreciation the following friends
who have provided items or services to the benefit of the play:*

Kellco Car Care (Stittsville)
Rooms International
Trudel Home Hardware (Kanata) Inc.

The Stillborn Lover by Timothy Findley is produced by special arrangement with
PLAYWRIGHTS UNION OF CANADA
54 Wolseley St., 2nd Floor, Toronto, Ontario, M5T1A5

BIOGRAPHIES

GWEN KNIGHT and **PETER JEFFERSON** (Directors) form a husband-and-wife team: they have acted, directed, produced and worked backstage on countless Kanata Theatre productions over the years. Their directing credits include *Murder Once Removed*, *Jill*, *The Country Girl*, *A Chorus of Disapproval*, *The Real Thing*, and *The Melville Boys*. Last season they collaborated on the wildly funny *Sylvia* which was a complete contrast to this evening's dramatic presentation. Earlier this season they were seen on stage together as husband and wife in *Homeward Bound*.



In the past, Gwen and Peter have also acted and directed extensively with The Ottawa Little Theatre.

DOROTHY BEAK (Marian Raymond) has been an active member of Kanata Theatre for many years, appearing most recently as Lil in *Kindertransport*. She was also in *Harvey*, *Arsenic and Old Lace*, *Romantic Comedy*, *Key for Two*, *Pygmalion*, and others. Her directing includes *Ghost on Tiptoe*, *Beyond Reasonable Doubt*, and *A Month of Sundays*. Dorothy has been producer or stage manager for many shows; for the last four years she has also found time to manage the busy Box Office.



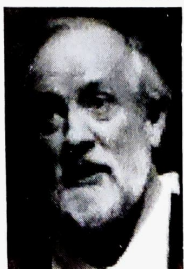
BEVERLEY BROOKS (Diana Marsden) has acted and worked backstage at Kanata Theatre since 1991, where her acting roles include Titania, Jean Brodie, Kate in *Sylvia*, Helga in *Kindertransport*, and Lizzie Borden Bridget in *Blood Relations*. She directed the recent *Homeward Bound*, plus *The Death of Dracula*, *The Woman In Black* and other plays. She has also acted at the Ottawa Little Theatre, Tara and with the Beachcomber Dinner Theatre Company. Beverley trained in drama in the UK.



BROOKE KENEFORD (Harry Raymond) acts, directs, and also works on sound. He played Reece in *Communicating Doors*, George Hay in *Moon Over Buffalo*, and Cooper in *A Month of Sundays*. As well as taking leading roles in farces such as *It Runs In The Family*, he was in *On Golden Pond*, *A Chorus of Disapproval*, *Waltz of the Toreadors* and many other plays. He directed the recent *You Can't Take It With You*, plus *Kindertransport*, *The Cemetery Club*, *Steel Magnolias* and others.



BEN TOLLEY (Michael Riordan) first appeared here as the Colonel in *Black Comedy*, but on stage he is more often seen as a singer from a Barbershop background. He played Balthasar in *Much Ado about Nothing* and Father Wolf in *The Jungle Book - The Musical*. When not on-stage or back-stage at the Ron Maslin Playhouse, he can usually be found building steam locomotives, or flying model aircraft at the local flying field.



GWENDY TOLLEY (Juliet Riordan) made her first appearance with Kanata Theatre in *Harvey*, in 1981. Since then, her stage appearances have included *Twelfth Night*, *Quiet in the Land*, *84 Charing Cross Road*, *Shadow Box*, *Look No Hans*, *Steel Magnolias*, *Alone Together* and last season's *Departures and Arrivals*. She is more often to be found backstage, as production manager, stage manager or applying makeup.



MARTIN WEEDEN (Jackman) was last seen on the "other side of the law" as the luckless and scheming Harold in *Murder by Misadventure*. Martin has also appeared in *Communicating Doors*, *The Death of Dracula*, *Hobson's Choice*, *The Madwoman of Chailot*, *Hansel and Gretel* and, for Goulbourn Players, *The Caretaker of Dreams*. He regularly works on props, sets, sound and lighting and finds Kanata Theatre experience to be a very welcome addition to the work-a-day world of engineering.



PAUL WELCH (Mahavolitch) has been in theatre arts for a year and a half. After stage workshops at Kanata Theatre, he made his debut in the Goulburn Millennium Pageant play, *The Caretaker of Dreams*. His Kanata Theatre debut was as Demetrius in *A Midsummer Night's Dream*, and he was Nick in *Homeward Bound*. He has taken courses with ACTRA and is currently pursuing acting for both stage and film; he has often been a movie "extra" - most notably in the CBC production *Trudeau*.



2002-2003 Season

Brochures and ticket application forms are available at the Box Office.

Current Subscribers

Please pick up your Personal Renewal Application before the performance or during the intermission.

Brochures and Applications are also available for new subscribers.

Please note the added performance, on Monday of the second week.

Excellent choice of seats on this night!

Earlier this season, we decided that, come September, there should be an extra performance of each production. With continuing enthusiastic audiences we are convinced it was a good decision: it will free up some seats for individual ticket sales for a while, although with the way Kanata is expanding



Our last play of this season, *Rumors*, held auditions on February 27th, with over 40 actors auditioning for 10 parts. This was quite a challenge for the Directors to select a cast!

Due to our "sold out" audiences, we would appreciate that if you are unable to use your tickets that you please give them to a friend, or release them to the Box Office.

Thank you for your continued support.

Sincerely, Joan Ritchie, President